



Nuclear Laser Medicine

# CHLAMYDIA TRACHOMATIS

## Chlamydia trachomatis Real-Time 2.0

**Fast, sensitive, specific and flexible.**

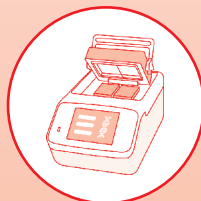
**Chlamydia trachomatis** is a gram-negative intracellular bacterium with a genomic DNA and a cryptic plasmid that in some strains is lost or partially deleted (pSW2). The test allows the amplification of the 16S rRNA gene and of a portion of the cryptic plasmid of *C. trachomatis*. The assay allows also the identification of the Swedish variant.

## WORKFLOW

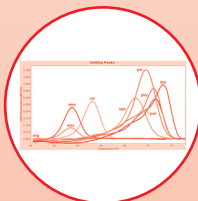
DNA  
Extraction



Real Time PCR



Results



## CHARACTERISTICS



### Target

16S rRNA and cryptic plasmid of *Chlamydia trachomatis*



### Technology

Real Time PCR



### Sample

Urine, seminal fluid and endocervical, vaginal, urethral, anorectal, pharyngeal and ocular swabs



### Turn around time

From sample to result: approximately 2h and 30 min



### Performance characteristics

- Sensitivity: 99%
- Specificity: 100%



**READY  
TO USE MIX**



**UNG ENZYME**



**POSITIVE CONTROL  
INCLUDED**



**ENDOGENOUS  
INTERNAL CONTROL**

# COMPATIBILITY

## Nucleic Acid Extraction

MagCore® Genomic DNA Whole Blood Kit, cod. NLM AA1185  
MagCore® Viral Nucleic Acid Extraction Kit, cod. NLM AA1186  
QIAasymphony® DSP Virus/Pathogen Midi Kit, cod. NLM AA1440/96  
DNA manual extraction on column, cod. NLM AA1001

## REAL TIME PCR INSTRUMENTS

CFX96 e CFX Opus, BioRad  
RotorGene Q, Qiagen  
AB7500 Fast, Applied Biosystems

Name	Code
Chlamydia trachomatis Real-Time 2.0	AA842/50



**NUCLEAR LASER MEDICINE S.R.L.**

Viale delle Industrie, 3  
20049 Settala (Milan) - ITALY  
TEL. +39 02 952451  
FAX +39 02 95245237.8  
segreteria@nlm.it - [www.nlm.it](http://www.nlm.it)



[www.nlm.it](http://www.nlm.it)