



Genvinset®

HLA-C*06 - Psoriasis Real Time



EUROPEAN UNION

European Regional Development Fund
A WAY TO MAKE EUROPE

Molecular determination of HLA-C*06 alleles

Kit for detecting the HLA-C*06 alleles
by Real-Time PCR using TaqMan®
probes technology

About Genvinset® HLA-C*06 - Psoriasis Real Time

Psoriasis Vulgaris is a chronic inflammatory disease of the skin, characterised by epidermal hyperplasia, inflammatory cellular infiltration and vascular remodelling. It has a prevalence of approximately 2-4% in the general population, and up to 40% of psoriatic individuals develop psoriatic arthritis. It has a complex aetiology which involves both genetic and environmental factors. However, the root cause of psoriasis remains unknown.

Family studies have demonstrated that psoriasis has a genetic basis and is multifactorial in most if not all cases. The existence of allelic associations between psoriasis and HLA genes has been appreciated for more than 50 years. HLA-C*06 has been identified as a major psoriasis susceptibility genetic polymorphism and identifies early-onset psoriasis (type 1) and the guttate subtype of the disease. The worldwide HLA-C*06 allele frequency varies greatly. Although the HLA-C*06 allele is highly associated with the disease, the allele frequency does not directly reflect the pathology prevalence, as the pathogenesis of psoriasis integrates genetic, environmental, and immunologic factors.

It has been shown that the presence of the HLA-C*06 allele affects different aspects of psoriasis, from genetic susceptibility to clinical manifestation, comorbidity and treatment efficacy.

Intended use

Genvinset® HLA C*06 is a semi-automated *in vitro* diagnostic kit for HLA-C*06 group of alleles qualitative detection in genomic DNA extracted from whole blood, associated with psoriasis susceptibility and its treatment effectiveness, by Real-Time PCR using TaqMan® probes technology.

Patients who can benefit from this determination are those referred by a specialist. The results of this test should not be the only ones on which the therapeutic decision is based and should be used as an aid in the diagnosis together with results of other markers of the disease.

The intended user of the kit is technical personnel trained to carry out the protocol and the interpretation of results described in the Instructions for Use.

Workflow



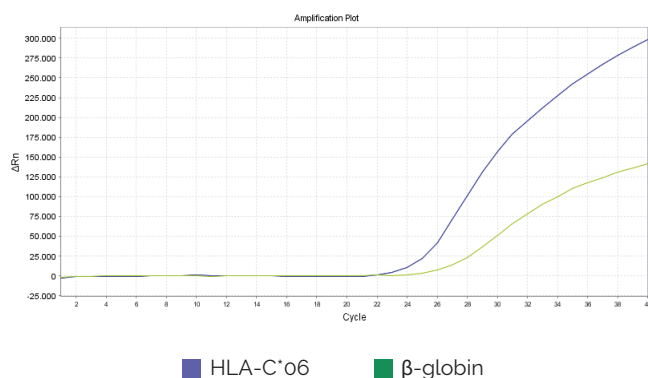
Product Information

24 tests - CODE: AA1550/24 † UDI-DI: 8437016942482

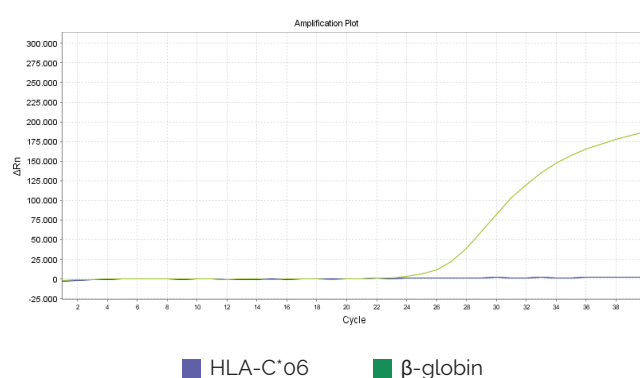
DESCRIPTION: Genvinset® HLA-C*06 - Psoriasi Real Time
CE-IVD certified

Results

HLA-C*06 positive sample



HLA-C*06 negative sample



Limitations

- See detected alleles in the document "HLA alleles detected_GVS-Co6" at www.bdrdiagnostics.com
- Mutations or polymorphisms at annealing primer/probe sites are possible and may result in the lack of allele definition. Other technologies could be necessary to resolve the typing.
- Data and result interpretation should be revised by qualified personnel.
- This product is an auxiliary tool for the diagnosis of patients with suspected psoriasis and can help assess the administration of the correct treatment. Use these results in conjunction with clinical data and results of other tests performed on the patient.



BLACKHILLS DIAGNOSTIC RESOURCES S.L.U.

SRN: ES-MF-000001091 (Spain) · FIC GVS-Co6 Rev. 02



EXCLUSIVE DISTRIBUTOR

Nuclear Laser Medicine srl

Viale delle Industrie, 3 - 20049 Settala (Milan), ITALY
Phone +39 02 952451 - Fax +39 02 95245237-8

VAT 08763060152

segreteria@nlm.it - www.nlm.it